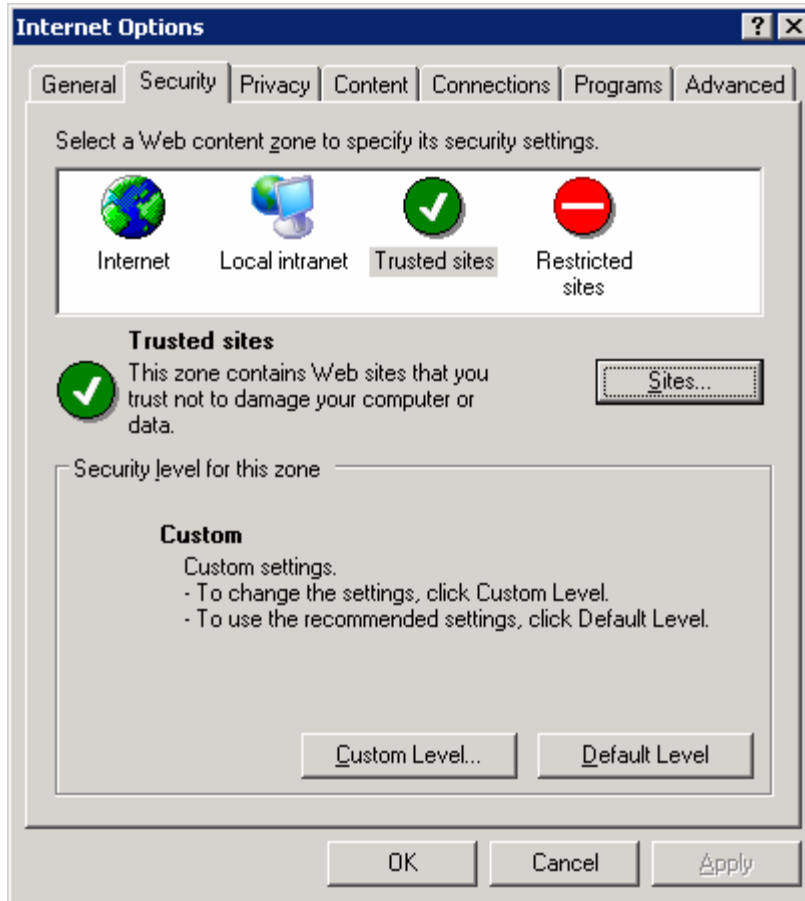


## Adding RailConnect domain to Trusted Sites

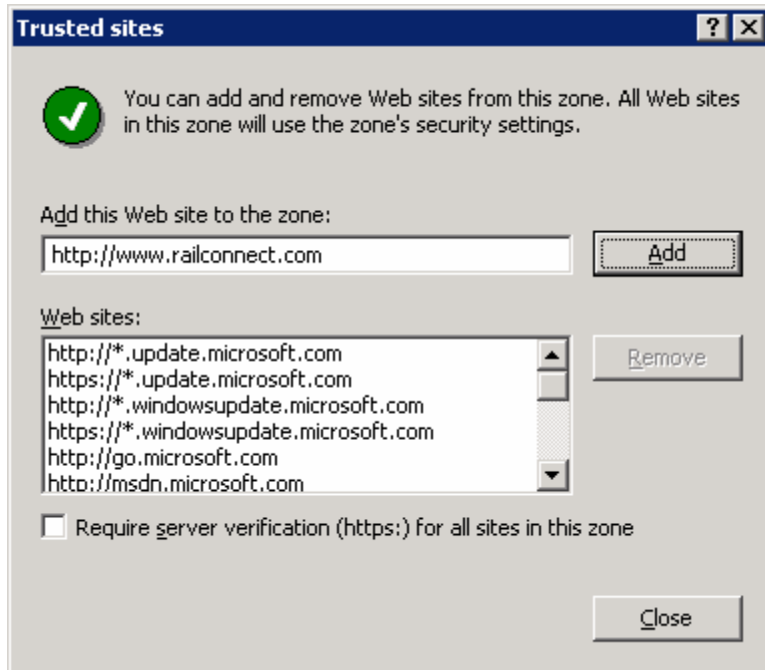
**Note:** If you do not see any of the options mentioned in this document, please contact your IT department.

### Internet Explorer 5.x and 6.x

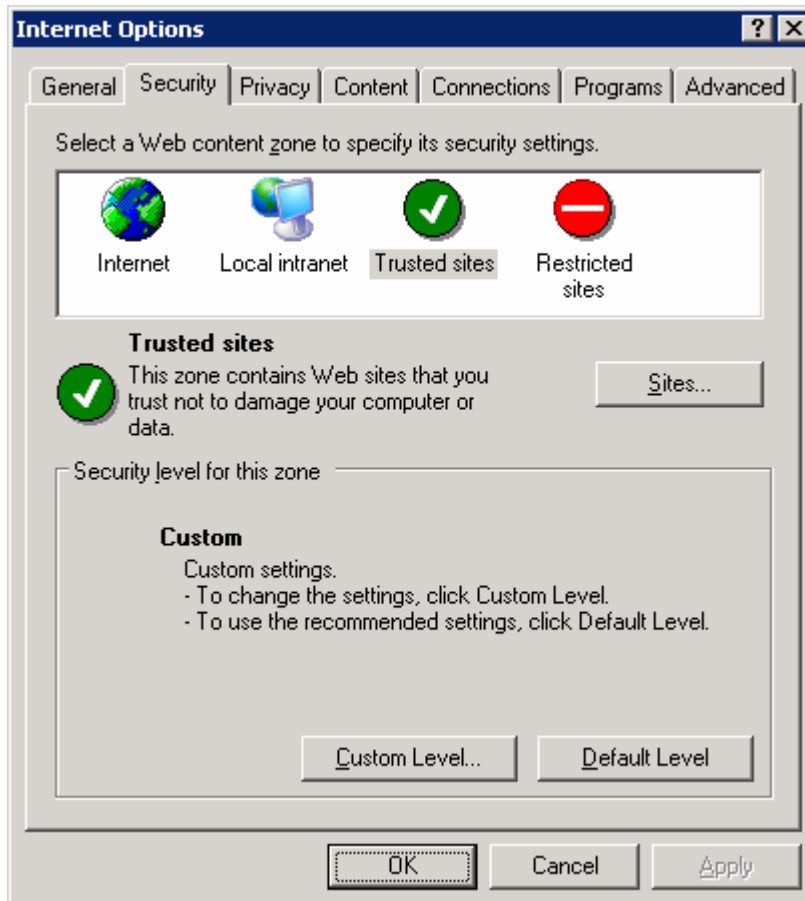
1. Within IE, go to **Tools | Internet Options**.
2. Click on the Security Tab, then select Trusted sites and click **Sites...** button



3. Type the RailConnect domain name and click **Add**.



4. Click **OK**.



5. Close and re-launch your browser.

### Internet Explorer 7.x

1. Within IE, go to **Tools | Internet Options**.
2. Click on the Security Tab, then select Trusted sites and click **Sites...** button



3. Type the RailConnect domain name and click **Add**.





5. Close and re-launch your browser.